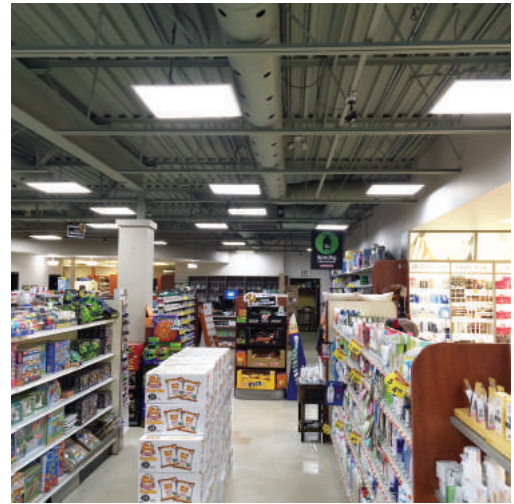




energreetechnologies
together committed to a greener future.

160 Don Park Road, Unit #3
Markham, ON L3R 1C3
www.energreetechnologies.com
Phone: 905-479-5999
Fax: 905-479-5997

32w LED 1x4 Panel Light



Specifications

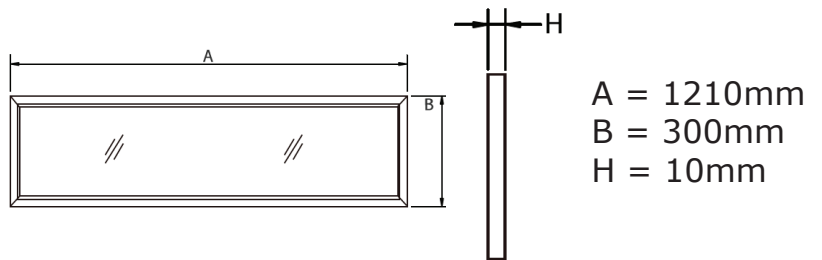
Input Voltage: 100-277VAC
Power: 32W
Lumen Efficiency: 130lm/w
Lumen Output: 4160lm
CCT: 3000K, 4000K (stock), 5000K
CRI: Ra>80
LED Chip Type: SMD 2835
Operating Temperature: -25°C-55°C
Power Factor: >0.9
Max Input Current: 0.5A
Dimmable: Yes (0-10V)
Lifespan: 50,000hrs
Warranty: 5 years
Certification: cUL/DLC

Ordering Information

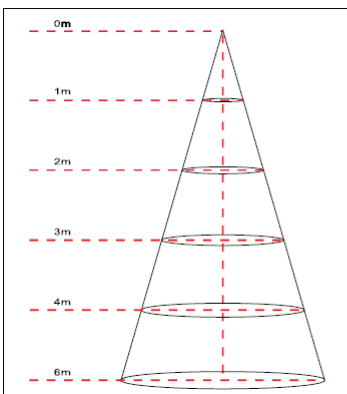
EGT-PL-1x4-32w-XXXXK
(4000K stock temperature)

*XXXX denotes colour temperature

Dimensions



Lux Chart



Height	Average Lux (lx)	Light range (dia.)
1M	1090.2	318.4cm
2M	272.5	636.8cm
3M	121.1	955.2cm
4M	68.1	1273.7cm
6M	30.3	1910.5cm

Photometrics

