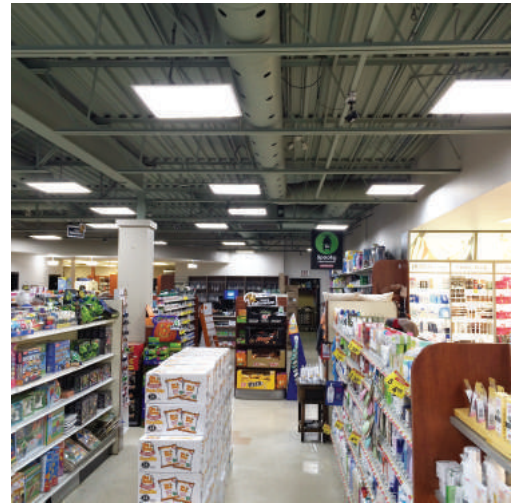




energreetechnologies
together committed to a greener future.

160 Don Park Road, Unit #3
Markham, ON L3R 1C3
www.energreetechnologies.com
Phone: 905-479-5999
Fax: 905-479-5997

50w LED 2x4 Panel Light



Specifications

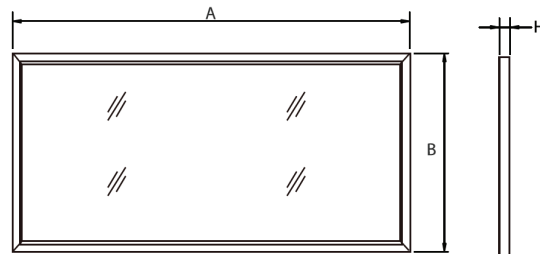
Input Voltage: 100-347VAC
Power: 50W
Lumen Efficiency: 100lm/w
Lumen Output: 5000lm
CCT: 3000K, 4000K (stock), 5000K
CRI: Ra>80
LED Chip Type: SMD 2835
Operating Temperature: -25°C-55°C
Power Factor: >0.9
Working Current: 1050mA
Dimmable: Yes (0-10V)
Lifespan: 50,000hrs
Warranty: 5 years
Certification: cUL/DLC

Ordering Information

EGT-PL2-2x4-50w-120/347V-XK
(4000K stock temperature)

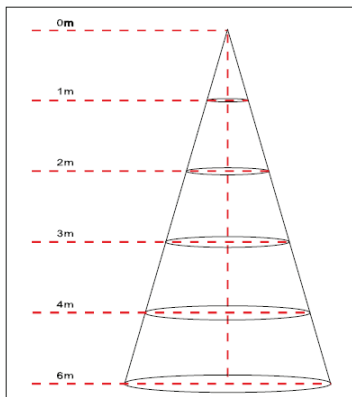
*X denotes colour temperature

Dimensions



A = 1212mm
B = 603mm
H = 9.6mm

Lux Chart



Height	Average Lux (lx)	Light range (dia.)
1M	1345.6	293.9cm
2M	336.4	587.8cm
3M	149.5	881.6cm
4M	84.1	1175.5cm
6M	37.4	1763.3cm

Photometrics

